

PDA10

Wireless Surveying Tool Kit



WIRELESS SYSTEM

INTRODUCTION

The *handheld* and *target* units may be used to survey wireless signal strength throughout non-hazardous areas of a facility prior to PDW30 or PDW90 equipment installation. The *target* unit is set in a desired installation location and the *handheld* is brought to another installation location. The *handheld* unit will provide an indication of signal strength between the two units. Repeat this process at all desired installation locations to attain an accurate representation of what kind of signal strength to expect after PDW30 or PDW90 installation.

FEATURES

- Convenient, portable Handheld Unit and Target Unit
- 32-Character Dual-Line Alphanumeric Dot Matrix LCD with Backlight
- Buttons for Cycling Through Network IDs, Repeaters, and Field Units
- Carrying Case with Instructions and includes CD Manual Inside

PDA10 Wireless Surveying Tool Kit

Simple to Use Buttons

The four buttons on the face of the handheld unit make it simple to power on the unit and start testing your devices for wireless signals. Cycle through any of your network to test field units and repeaters for strong wireless signals.



▲ PDA10 Handheld Unit Shown

SPECIFICATIONS

General

Display: 32-Character Dual-Line Alphanumeric Dot Matrix LCD with Backlight (4.68mm x 2.21mm characters)

Power: Two AA Batteries

Wireless Radio

Frequency: 900 MHz

Interference Reduction: Frequency Hopping Spread Spectrum (FHSS)

Range: 500 ft (152.4 m) indoor, 1 mi (1.61 km) outdoor (line-of-sight)

Power Output: 24 dBm (250 mW)

Sensitivity: -101 dBm

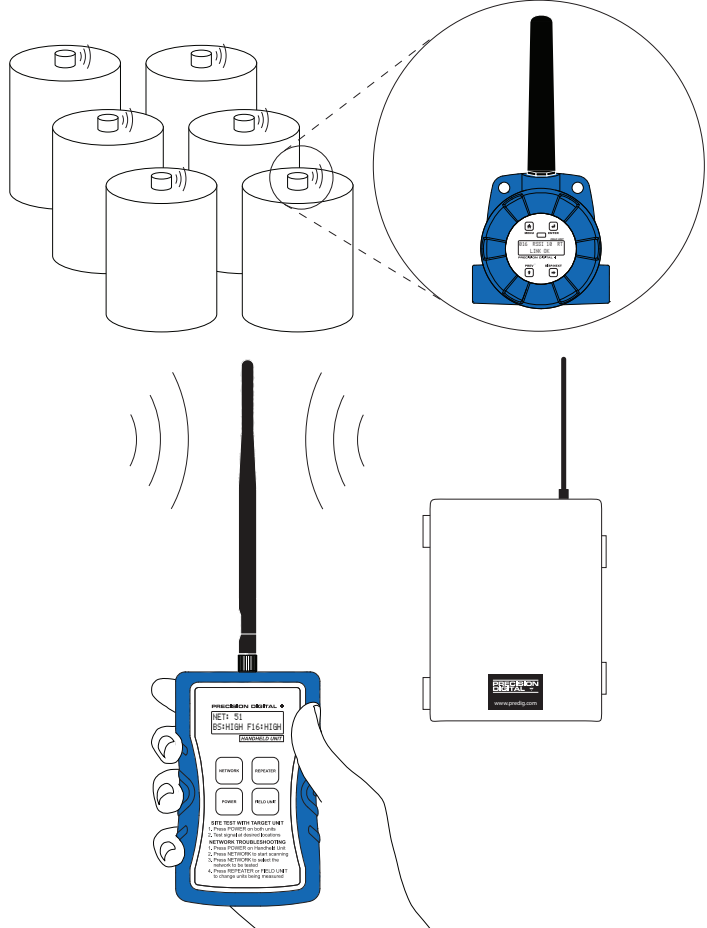
ORDERING INFORMATION

Accessory for PDW30 and PDW90	
Model	Description
PDA10	PDW Wireless Signal Strength Survey Tool

APPLICATION

The PDA 10 Wireless Surveying tool kit may be used for a sight survey before installation or purchase of a PDW30 or PDW90 wireless system.

The PDW10 may also be used to troubleshoot existing installations. The handheld unit will scan through network IDs until it discovers wireless devices on one of them. It will then provide an indication of connected signal strength to the discovered units. This may prove useful if you are, for example, attempting to install additional field units to your PDW90 system or trying to troubleshoot connectivity issues.



Your Local Distributor is:



46, Jalan SS 22/21, Damansara Jaya,
47400 Petaling Jaya,
Selangor Darul Ehsan, Malaysia.

Email: nog@nog.com.my

Web access: <http://www.nog.com.my>

Disclaimer

The information contained in this document is subject to change without notice. Precision Digital Corporation makes no representations or warranties with respect to the contents hereof, and specifically disclaims any implied warranties of merchantability or fitness for a particular purpose.

©2016 Precision Digital Corporation. All rights reserved.

LDSW10_A 12/16